




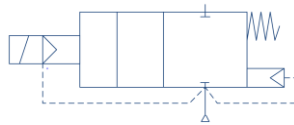
SKU: SV5231

-  Brass High Temp. 200°C Solenoid Valve
-  Messing High Temp . 200 ° C Magnetventil
-  Latón de alta temperatura . La válvula solenoide 200 ° C
-  Brass High Temp . 200°C Electrovanne

Valves[™]
O N L I N E

2 Way Assisted Lift Brass Steam Solenoid Valve 200°C

Normally Closed



A servo assisted, normally closed brass bodied solenoid valve suitable for steam and gasses, with flying leads (30CM) electrical connections.

PTFE Seals AND H Class Insulation, IP54 protection
Sizes: 3/8" to 2"

Pressure rating 0.5-12 Bar Steam
Voltage: 24V DC, 24V AC, 110V AC and 230V AC
Suitable for high temperatures up to 200°C Steam
WPA3C Coil (power Consumption 18 Watts-AC)



Description

The SV5321 is a two way normally closed assisted lift solenoid valve in sizes 3/8" - 2". It is a diaphragm pilot operated valve requiring 0.5 bar pressure to operate. With brass body and PTFE seats the valve is suitable for hot water and steam up to 200°C



Beschreibung

Die SV5321 ist ein Zwei-Wege stromlos geschlossen unterstützt Lift Magnetventil in den Größen 3/8" - 2". Es ist eine Membran vorgesteuerte Ventil 0,5 bar Druck erforderlich zu bedienen. Mit Messinggehäuse und PTFE- Sitze das Ventil für Heißwasser und Dampf bis 200 ° C geeignet ist,



Descripción

EV SV5321 es una de dos vías normalmente cerrada la válvula de solenoide de elevación asistida en tamaños de 3/8" - 2". Es una válvula de accionamiento piloto de diafragma requieren 0,5 bar de presión de operar. Con cuerpo de latón y PTFE con capacidad para la válvula es conveniente para el agua caliente y vapor hasta 200°C .



Description

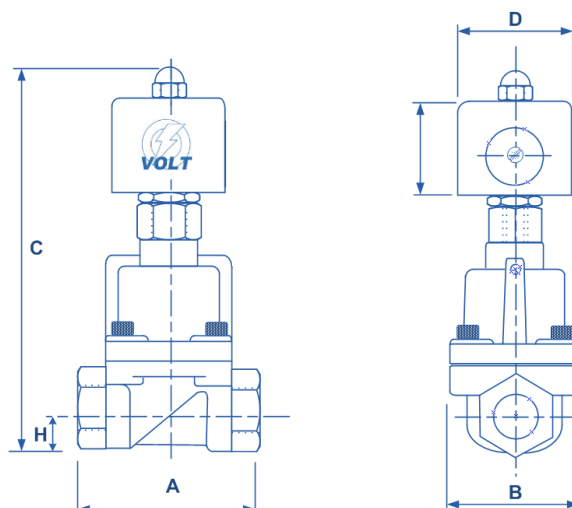
Le SV5321 est une deux voies normalement fermée assistée levée de soupape électromagnétique dans les tailles 3/8" - 2". Il est une vanne actionnée pilote à membrane nécessitant 0,5 bar de pression pour fonctionner . Avec le corps en laiton et PTFE sièges de la vanne est adapté pour l'eau chaude et de la vapeur jusqu'à 200°C

-  Brass High Temp. 200°C Solenoid Valve
-  Messing High Temp . 200°C Magnetventil
-  Latón de alta temperatura . La válvula solenoide 200°C
-  Brass High Temp . 200°C Electrovanne

2/2 High Temperature Brass Solenoid Valve

The type SV5231 is Synonymous with steam switching for high temperatures. Steam up to 200°C. Rated up to 12 bar from 3/8" - 2" - Servo Assisted 0.5 bar.

IP68 (EN60529:1991+A1:2000) UL + CSA Approved Coil & IP65 LED Connector PG11 DIN43650A
 NPT Thread
 WPA3C IP65 (100% Rated N rated coil with 30cm flying leads 33.6 Watts 57VA)
 Other custom made options available upon request



Materials		Seal Material	
Body	Die Cast Brass	200° C	PTFE
Tube, Piston and Internal parts	Stainless Steel		
Seals and Gaskets	PTFE + Brass		
Coil	Duroplast Moulded Resin		
Test Pressure	30 Bar		

Electrical Data					
Voltage (-10% + 10%) Duty Rating 90%	Coil	Power Consumption		Insulation Class	IP Rating With Connector
		Inrush	Hold		
110 - 220 (50 or 60 Hz)	WPG1	11.2VA	8.2VA	H 180°C	IP65 with connector
12 - 24 (DC)		12 Watts			
12 - 24 DC	WPG2	18.7VA	15.3VA		
24 - 110 - 220 (50 or 60 Hz)		18 Watts			

SPECIFICATIONS							Dimensions							
Port	Orifice	Kv Ltr/min	Pressure Rating (Bar)			Weight Kg	A	B	C	D	E	F	G	H
			Min	Max Steam	Max Air/Water									
1/8"	3	5.2	0	10	10	0.47	41	19	86	41	40	-	1/8"	11
1/4"	3	5.2				0.43	41	19	86	41	40	-	1/4"	11
3/8"	4	9.7				0.56	50	25	91	52	45	-	3/8"	12
3/8"	15	75	0.5	12	20	1.13	75	48	123	40	65	38	3/8"	15
1/2"	15	75				1.1	75	48	123	40	65	38	1/2"	15
3/4"	20	155				1.5	85	72	149	40	65	38	3/4"	18
1"	25	220				1.85	100	72	149	40	65	38	1"	23
1 1/4"	35	433				3.3	120	9	168	40	65	38	1 1/4"	33
1 1/2"	35	433				3.25	120	90	168	40	65	38	1 1/2"	33
2"	50	800				6.8	150	122	203	40	65	38	2"	41