





SKU: SV5214

-  VOLT Miniature Brass Solenoid Valve
-  VOLT Miniatur- Messing -Magnetventil
-  VOLT Latón válvula de solenoide en miniatura
-  VOLT Brass Electrovanne miniature

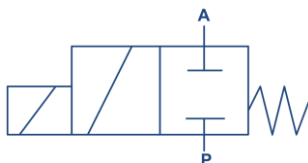
Valves[™]
O N L I N E

- 1/8 " – 1/4" Brass General Purpose Solenoid Valve
- 1/8 " – 1/4" Messing Mehrzweck -Magnetventil
- 1/8 " – 1/4" Latón y de uso general de electroválvula
- 1/8 " – 1/4" Brass usage général Electrovanne

Miniature Brass Solenoid Valve with Threaded Ports



- Media : air – water – light oil – vacuum
- Pressure range: 0 to 25 bar max
- Media temperature: 80°C max
- Ambient temperature -10° to +50°C
- Media viscosity: 40 centistokes max
- Weight including coil: 175g, 255g, 475g
- Opening / Closing time: 20 milli sec. max
- Body Brass
- Seal material: NBR, Optional FKM, EPDM



Description

Direct Acting brass body 2/2 way normally closed solenoid valve, with 1/8" – 1/4" ports. Various seal options NBR, EPDM and FKM. Suitable for pressures up to 25 Bar, Vacuum and temperatures up to 80 deg °C.



Beschreibung

Direkt wirkender Messingkörper 2/2 Wege stromlos geschlossen Magnetventil , mit 1/8 " - 1/4" Anschlüsse. Verschiedene Dichtungs Optionen NBR, EPDM und FKM . Geeignet für Drücke bis 25 bar, Vakuum und Temperaturen bis zu 80 Grad °C







Descripción

Acción Directa cuerpo de latón 2/2 vías normalmente cerrada la válvula de solenoide , con 1/8 " - 1/4" puertos . Varias opciones de sellado NBR , EPDM y FKM . Adecuado para presiones de hasta 25 bar , vacío y temperaturas de hasta 80 grados °C

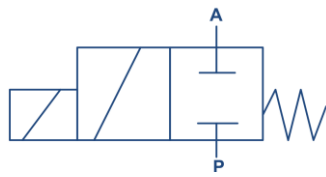


Description

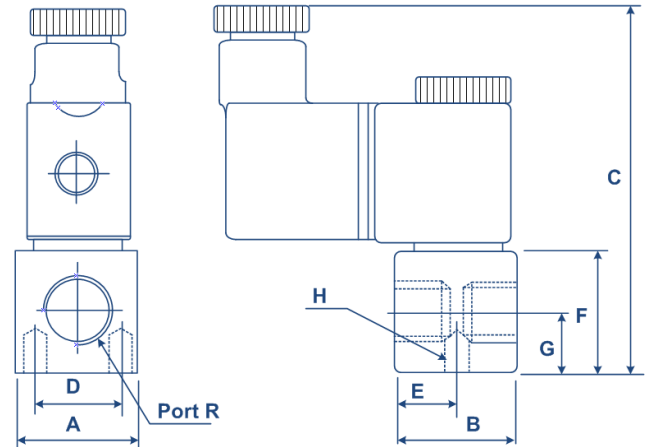
Action directe Corps en laiton 2/2 normalement fermé électrovanne , avec 1/8 "- 1/4" ports . Diverses options d'étanchéité NBR , EPDM et FKM . Convient pour des pressions jusqu'à 25 bar, vide et des températures allant jusqu'à 80 ° °C .

-  VOLT Miniature Brass Solenoid Valve
-  VOLT Miniatur- Messing -Magnetventil
-  VOLT Latón válvula de solenoide en miniatura
-  VOLT Brass Electrovanne miniature

General Purpose Miniature Brass Solenoid Valve



Seal Material	
130° C	FKM
80° C	NBR
160° C	EPDM



SPECIFICATIONS								Dimensions							
Seal	Port	Orifice	Kv Ltr/min	Pressure Rating (Bar)			Weight Kg	A	B	C	D	E	F	G	H
				Min	AC Max	DC Max									
NBR EPDM FKM	1/8"	1.5	1.2	0	25	16	0.175	22	22	72	15	11	22	7.5	M4/P0.7/L6.5
NBR EPDM FKM	1/4"	2.3	2	0	10	6	0.255	25	35	75	18	18	25	13	M5/P0.8/L7.0

IP65 Coil & Connector PG9 – (DIN 43650 B 1/8 & 1/4 Ports) (DIN 43650A 3/8 Port)
 ATEX 22001EX Coil: ATEX EExmII T4 II 2G & 2D IP65 T130°C
 ATEX 22003EX Coil: ATEX EExmII T4 II 2G & 2D IP65 T130°C
 NPT thread

Electrical Data					
Voltage (-10% + 15%) Continuous Duty 100%	Coil	Power Consumption		Insulation Class	IP Rating With Connector
		Inrush	Hold		
24 - 110 - 230 (50 or 60 Hz)	22001	11.6VA	8.5VA	F 155°C	IP65 with connector
12 - 24 (DC)		4.5Watts			

SPARE COIL 22001

CABLE PLUG

Din1 - STD

Din1led – RED led

Din1ledvdr – red LED + varistor