





SKU: KG5018

-  Cast Iron Knife Gate Valve – Unidirectional - Lever
-  Gusseisen -Plattenschieber – einfachgerichtet Hebel
-  Reparto de la válvula Puerta de Hierro Knife - unidireccional Palanca
-  Cast Iron Gate Valve couteau – unidirectionnelle - levier

**Valves**<sup>™</sup>  
ONLINE

- 3" - 8" Cast Iron Knife Gate Valve – EPDM Seat – 304 St St Gate
- 3" - 8" Cast Iron Knife Gate Valve – EPDM Seat – 304 St St Gate
- 3" - 8" Reparto de la válvula de puerta del cuchillo de hierro - EPDM Asiento - 304 St St Puerta
- 3" - 8" Fonte Vanne guillotine - EPDM Siège - 304 St St Porte



### Cast Iron Knife Gate Valve Lugged PN10 Lever

- Offers Excellent Economy
- Lever Operated
- 3"-8"
- EPDM Seal with Stainless Steel Gate

#### Description:

Volt economy cast iron, powder coated Lever operated Uni-Directional Knife Gate Valve. Lugged and Tapped Pattern suitable to fit between PN10 flanges upto 8". EPDM seal and stainless steel 304 grade gate. This valve is ideally suited for general industrial service applications.

The design of the body and seat assures non clogging shut off on suspended solids in industries such as: Pulp and Paper, Wastewater treatment plants, Food, Biogas and Beverage, Bulk handling, Mining and HVAC

Temperature good for - 10°C to 120°C



#### Description

VOLT Economy Unidirectional Knife gate valve, cast iron powder coated body, having a full circular bore which allows a high flow capacity with a very low pressure drop. EPDM seats with 304 stainless steel gate, rising stem Lever operated. Fits between PN10 Flanges.



#### Beschreibung

VOLT Economy gerichtet Keilschieberventil , Gusseisen pulverbeschichtet Körper , mit einem vollen kreisförmigen Bohrung , die eine hohe Durchflussleistung mit einem sehr niedrigen Druckabfall ermöglicht . EPDM Sitze mit 304 Edelstahl -Tor, steigende Spindel Hebel betätigt. Passend zwischen Flansche PN10 .



#### Descripción

VOLT Economía unidireccional Cuchillo válvula de compuerta , polvo de hierro fundido cuerpo recubierto, que tiene un orificio circular completo que permite una capacidad de flujo alta con una caída de presión muy baja . Asientos de EPDM con 304 puerta de acero inoxidable , el aumento de la palanca de vástago operados . Se adapta entre PN10 Bridas .



#### Description





VOLT économie unidirectionnel Couteau vanne , poudre de fonte corps enduit , ayant un trou circulaire complète qui permet un débit élevé avec une très faible perte de pression . Sièges EPDM avec 304 porte en acier inoxydable , tige montante levier actionné . Convient entre PN10 Brides .

**PN10 2" -10"**

**PN6 12"**

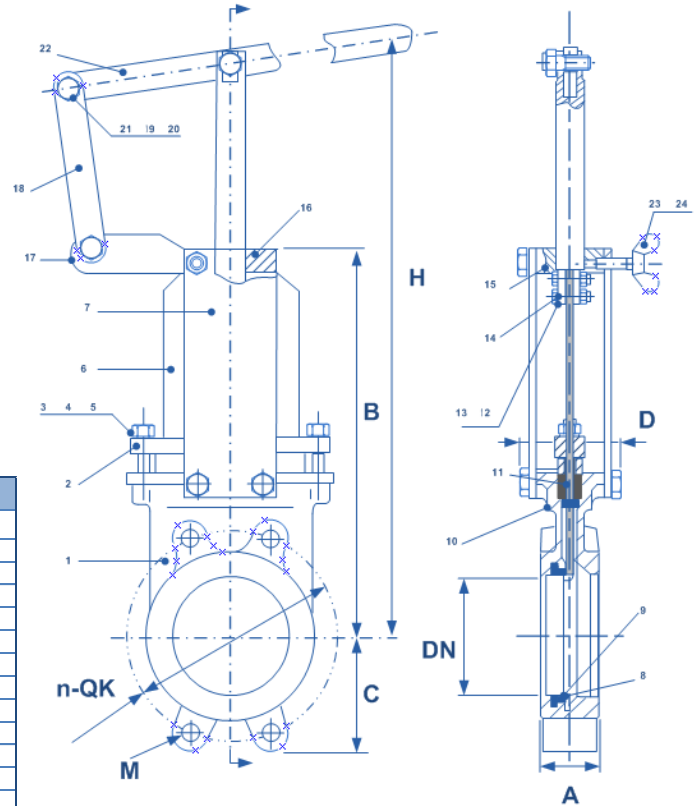
**PN10 Rated**

**- 10°C to 120°C**

-  Cast Iron Knife Gate Valve - Unidirectional
-  Gusseisen -Plattenschieber - einfachgerichtet
-  Reparto de la válvula Puerta de Hierro Knife - unidireccional
-  Cast Iron Gate Valve couteau - unidirectionnelle

## Cast Iron Knife Gate Valve – PN10-PN6

- Offers Excellent Economy
- 3" - 8"
- Lever Operated
- EPDM Seat and Stainless Gate



Material List		
Item	Part	Description
1	Body	GG25 Cast Iron
2	Valve Cap	Aluminium
3	M10 Washer	Steel
4	M10 Nut	Steel
5	M10x45 Stud Bolt	Steel
6	Gate	Stainless Steel 304
7	Plate Stay	Steel
8	L Sealing	EPDM
9	SS Ring	AISI 304
10	Seat	PTFE
11	O-Ring	NBR
12	M6 x 25 SS Bolt	Stainless Steel 304
13	M6 Polyamide Nut	Stainless Steel 304
14	Stem	Stainless Steel 304
15	Connect Seat	Steel
16	Oil Bearing	Composite Material
17	Hand Lever 1	Steel
18	Hand Lever 2	Steel
19	Hinge Pn 10x22	Stainless Steel 304
20	Oil Bearing	Composite Material
21	Lock Nut	Steel
22	Hand Lever 3	Steel
23	Fastening Bolt	Steel
24	Lock Stick	Brass

**Options**  
**Operators:**  
Handwheel, Lever, Pneumatic,  
Side Protection Plates

DIMENSIONS										
DN	INCHES	A	B	C	D	H	n	M		Kg
								No	PN10	
80	3"	50	284	88	92	513	8	4	M16	8.5
100	4"	50	331	100	92	672	8	4	M16	10
125	5"	50	361	113	102	760	8	4	M20	12
150	6"	60	413	128	102	828	8	4	M20	14.5
200	8"	60	520	155	120	1064	8	4	M20	32

Pressure / Temperature Rating		
<b>Pressure</b>	3" - 8"	10 Bar
<b>Temperature</b>	EPDM Seats	120°C