





SKU: AB4238

-  VOLT - Electric Actuated Stainless Steel Butterfly Valve
-  VOLT - Elektrische betätigte Edelstahl Absperrklappe
-  VOLT - Válvula de mariposa eléctrica de acero inoxidable accionadas
-  VOLT - Acier inoxydable électrique Actuated vanne papillon

Valves[™]
O N L I N E

- 1 1/2" - 8" Electric Actuated Stainless Steel Wafer Butterfly Valve PTFE Liner
- 1 1/2" - 8" Elektrische betätigte Edelstahl Absperrklappe
- 1 1/2" - 8" Válvula de mariposa eléctrica de acero inoxidable accionadas
- 1 1/2" - 8" Acier inoxydable électrique Actuated vanne papillon



Stainless Steel Electric Actuated Butterfly Valve



Description

An electric actuated butterfly valve that fits between flanges. The all stainless steel wafer butterfly valve has a 316 SS disc/shaft with PTFE on EPDM liner. The actuator has a powerful rotary motor with various supply options 230, 110 & 24 VAC – 24 VDC Temperature Range -20°C to 120°C intermittent. Many Options Available ie modulating, battery back up, ATEX etc..



Beschreibung

Eine elektrische betätigte Drosselklappe, die zwischen Flanschen passt. Die komplett aus Edelstahl Wafer Absperrklappe hat ein 316-Disc / Welle mit PTFE auf EPDM Liner. Der Stellantrieb verfügt über eine leistungsstarke Drehmotor mit verschiedenen Versorgungsoptionen 230, 110 und 24 VAC - 24 VDC Temperaturbereich -20 ° C bis 120 ° C intermittierend. Viele Möglichkeiten, dh Modulations, Batterie-Backup, ATEX etc ..



Descripción

Una válvula de mariposa de accionamiento eléctrico que se coloca entre las bridas. La válvula de mariposa de la oblea de todo el acero inoxidable tiene un disco de 316 SS / eje con PTFE en el forro de EPDM. El actuador tiene un motor rotativo de gran alcance con varias opciones de suministro de 230, 110 y 24 VAC - 24 VDC Rango de temperatura de -20°C a 120°C intermitente. Muchas opciones disponibles, es decir modulación, batería de respaldo, etc .. ATEX



Description

Une vanne électrique actionné papillon qui se situe entre brides. La vanne tout inox plaquette de papillon a un disque de 316 SS / arbre de PTFE EPDM sur liner. L'actionneur a un moteur rotatif puissant avec diverses options d'alimentation 230, 110 et 24 VAC - 24 VDC Plage de température de -20°C à 120°C intermittente. Nombreuses options disponibles à-dire modulation, batterie de secours, etc .. ATEX

- Manual Override, Limit Switches
- Anti Condensation Heaters
- Many Options – Control – ATEX
- 1/2" to 8"
- PTFE and Stainless Steel Wetted parts

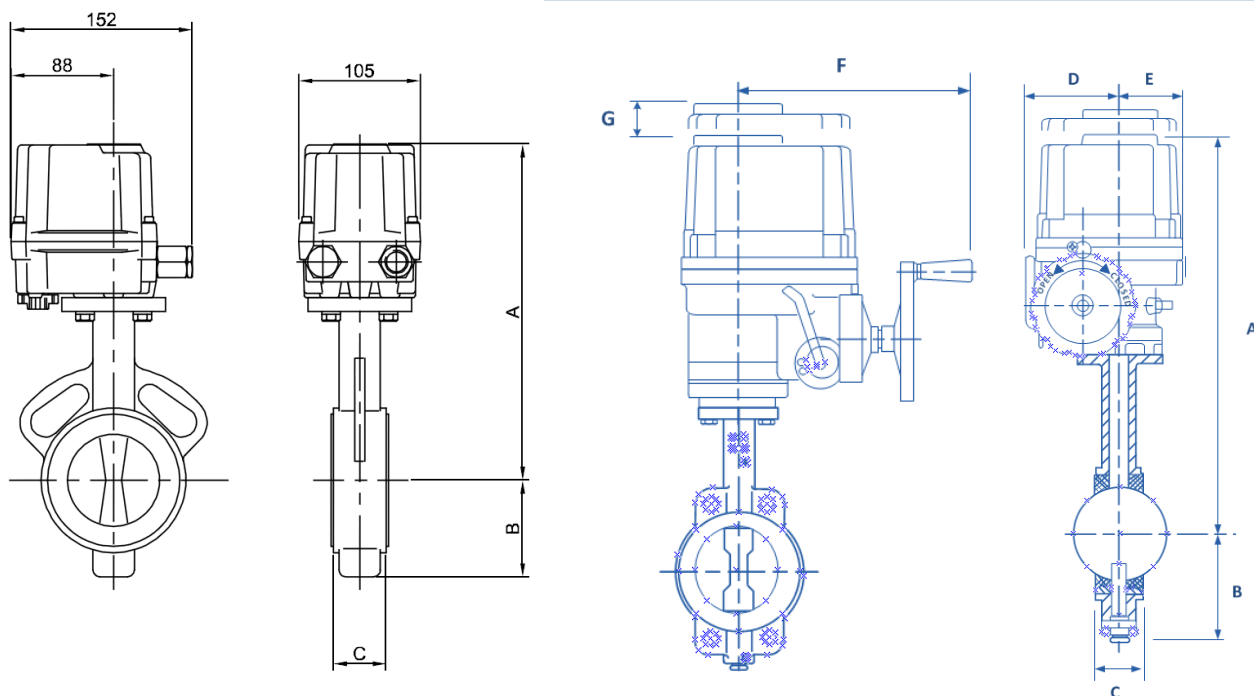
DESCRIPTION

A powerful electrically operated all stainless steel butterfly valve designed for aggressive or corrosive environments, where the aseptic value of stainless steel is a requirement. 316 stainless steel body and disc with PTFE Liner on EPDM backing. The valve will fit between PN10/16, ANSI150 flanges. Having ISO 5211 top works for direct mounting. Our HQ Electric actuators make this an ideal on/off combination. IP65 Protected with epoxy coated aluminium housing and various supply power options. The actuator has switches fitted as standard.

Temperatures from -20°C to 95°C constant and 120 deg C intermittent.

-  VOLT - Electric Actuated Stainless Steel Butterfly Valve
-  VOLT - Elektrische betätigte Edelstahl Absperrklappe
-  VOLT - Válvula de mariposa eléctrica de acero inoxidable accionadas
-  VOLT - Acier inoxydable électrique Actuated vanne papillon

Electric Actuated Stainless Steel Butterfly Valve







Dimensions					Operating Time	Weight
Valve	Actuator	A	B	C	Seconds	Kg
2"	HQ004	260	128	45	14	5
2 1/2"	HQ006	284	136	48	14	6
3"	HQ006	291	143	49	14	6

Dimensions									Operating Time	Weight
Valve	Actuator	A	B	C	D	E	F	G	Seconds	Kg
4"	HQ015	309	163	55	142	268	338	160	14	7
5"	HQ020	428	187	58	142	268	338	160	16/13	13
6"	HQ030	469	203	59	160	290	368	160	25/21	24
8"	HQ060	512	237	64	160	290	368	160	25/21	31

Material List	
Body	A351 CF8M Stainless Steel
Disc	A351 CF8M Stainless Steel
Liner	PTFE/EPDM
Stem	416 Stainless Steel
Pin	316 Stainless Steel
Bushes	Bronze/PTFE
O-Rings	EPDM

Pressure/Temperature	
Size	1 1/2" - 6" Max 16 Bar
	8" 10 Bar
Temperature	-20 °C to 120 °C Intermittent
	-20 °C to 95°C Constant

WIRING DIAGRAMS IN LID OF ACTUATOR AND IN SECTION ACTUATOR ACCESSORIES

-  VOLT - Electric Actuated Stainless Steel Butterfly Valve
-  VOLT - Elektrische betätigte Edelstahl Absperrklappe
-  VOLT - Válvula de mariposa eléctrica de acero inoxidable accionadas
-  VOLT - Acier inoxydable électrique Actuated vanne papillon

Electric Actuated Stainless Steel Butterfly Valve

Actuator Specification for HQ004/HQ006	
Enclosure	Weaterproof IP67
Power Supply	110/220V 50/60Hz, 24 VAC/VDC
Operating Time	14/12 Secs
Limit Switches	4 x SPDT, 250V AC 3A
Space Heater	2W (110/240V AC)
Manual Override	Hexagon
Duty Cycle	On/Off Duty S2, 35%
Travel Angle	90°
Conduit Entries	2 x M20
Ambient Temperature	minus 20° C to + 70° C
External Coating	Dry Powder, Polyester

Actuator Specification for HQ008/HQ0020	
Enclosure	Weaterproof IP67
Power Supply	110/220V 1PH, 24 VAC/VDC, 380/440 AC 3PH
Operating Time	see hart
Limit Switches	4 x SPDT, 250V AC 10A
Space Heater	210W (110/240V AC) Anti Condensation Heater
Manual Override	Handwheel
Duty Cycle	S4, 70% standad, 100% for Max 30 mins
Travel Angle	90°
Conduit Entries	2 x M25 (PG13.5 or 1/2" NPT Option)
Ambient Temperature	minus 20° C to + 70° C
External Coating	Dry Powder, Polyester



OPTIONAL EXTRAS

- ATEX
- BATTERY BACK UP (CLOSE ON POWER FAILURE)
- MODULATING POSITIONER

EXTRAS INCLUDED

- ANTI CONDENSATION HEATERS
- MANUAL OVERRIDE
- LIMIT SWITCHES
- OPTICAL INDICATOR
- TORQUE LIMIT SWITCH (HQ8 & ABOVE)

WIRING DIAGRAMS IN LID OF ACTUATOR AND IN SECTION ACTUATOR ACCESSORIES

Standard Specification

Type (model)	Max Output Torque	Operating Time 50/60Hz	Motor Class E	Rated Current (A)				Weight Kg
				24V	110V	220V	24VDC	
		90°	W F					
HQ - 004	40NM	14 / 12 Secs		0.3	0.39/0.4	0.19/0.2	0.2	3
HQ - 006	80NM	14 / 12 Secs		0.3	0.39/0.4	0.19/0.2	0.2	3

PERFORMANCE

MODEL	HQ008	HQ015	HQ020	HQ030	HQ050	HQ060	HQ080	HQ120
TORQUE(Nm)	80	150	200	300	500	600	800	1200
SPEED 90° 50/60Hz	16/13	25/21	25/21	31/26	31/26	31/26	34/28	34/28
CURRENT 110/1/50 (A)	1.1	1.65	1.67	1.86	3.62	3.62	4.1	4.2
220/1/50 (A)	0.55	0.88	0.89	0.92	1.58	1.62	2.2	2.35
MAX 380/3/50	N/A	0.31	0.31	0.35	0.59	0.6	0.85	0.87
WEIGHT	7.4	16.6	16.6	22	23	23	29	29
MAX.SQ.DRIVE	17	19	19	30	30	30	40	40



VOLT - Electric Actuated Stainless Steel Butterfly Valve
 VOLT - Elektrische betätigte Edelstahl Absperrklappe
 VOLT - Válvula de mariposa eléctrica de acero inoxidable accionadas
 VOLT - Acier inoxydable électrique Actuated vanne papillon

Valves[™]
 ONLINE

Electric Actuated Stainless Steel Butterfly Valve

SELECT YOUR PERFECT VALVE ONLINE



STANDARD PNEUMATIC



STANDARD ELECTRIC



HEAVY DUTY ELECTRIC



PNEUMATIC WITH PILOT SOLENOID



PNEUMATIC WITH SWITCHBOX



FULLY LOADED PNEUMATIC

There's more :- we can fit modulating positioners, ATEX Switches, Solenoids, Electric Actuators and Stainless steel Pneumatic Actuators! Please Enquire



Wall Mounted



Rack & Pinion



Linear