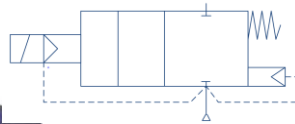


SKU: SV5232

- 🇬🇧 VOLT Stainless Steel High Temp. Solenoid Valve
- 🇩🇪 VOLT Edelstahl High Temp . Magnetventil
- 🇪🇸 VOLT Acero inoxidable de alta temperatura . Válvula de solenoide
- 🇫🇷 Acier inoxydable haute température. Electrovanne

Valves[™]
O N L I N E

- 1/2" - 2" Steam Brass Solenoid Valve up to 200°C
- 1/2" - 2" Dampf- Messing -Magnetventil bis 200 °C
- 1/2" - 2" Latón válvula de solenoide de vapor hasta 200°C
- 1/2" - 2" Vapeur laiton Solenoid Valve jusqu'à 200C



2 Way Assisted Lift St. St. Steam Solenoid Valve 185°C

Normally Closed



Description

The SV5232 is a two way normally closed ½" - 2" diaphragm valve, pilot operated, with stainless steel body and PTFE seats. Suitable to shut off liquid and gaseous fluids, particularly suitable to sealing shut off overheated water and steam (verify the compatibility of fluid Internal components with materials in contact).



Beschreibung

Die SV5232 ist ein Zwei-Wege normalerweise geschlossen ½" - 2" Membranventil , vorgesteuert , mit Edelstahlgehäuse und PTFE Sitze Geeignete flüssige und gasförmige Medien abzusperrn , besonders geeignet Abdichtung überhitzte Wasser und Dampf (überprüfen Sie die Kompatibilität abgeschaltet. Fluid Interne Komponenten mit Materialien in Kontakt) .



Descripción

El SV5232 es una forma de dos normalmente cerrados ½ - válvula de diafragma " 2 " , accionada por piloto , con los asientos del cuerpo y de PTFE de acero inoxidable Adecuado para apagar líquidos y fluidos gaseosos , especialmente adecuado para el sellado cortar el agua sobrecalentada y vapor (comprobar la compatibilidad. Los componentes internos del fluido con los materiales en contacto)







Description

Le SV5232 est une deux voies normalement fermé ½ - valve " 2 " à membrane , à commande assistée, avec corps et PTFE sièges en acier inoxydable Convient pour couper fluides liquides et gazeux , particulièrement adapté à l'étanchéité couper l'eau surchauffée et de la vapeur (vérifier la compatibilité . des composants internes du fluide avec les matériaux en contact) .

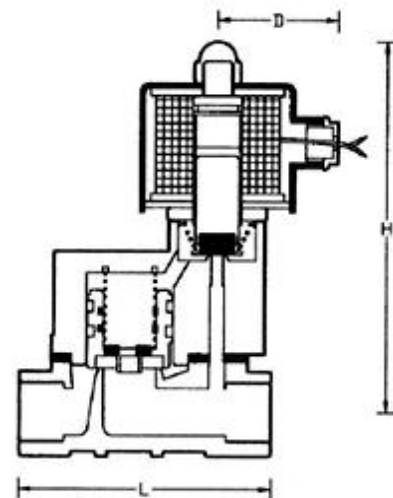
- **Media: Air, water, light oil, steam**
- Pressure range: 0.2 to 10 bar max
- Media temperature: +185°C max
- Ambient temperature: -10° to +50° C max
- Media viscosity: 20 centistokes max
- Mounting: Coil upright
- Body: Forged 316 Stainless Steel
- Seal & Gaskets: PTFE



-  VOLT Stainless Steel High Temp. Solenoid Valve
-  VOLT Edelstahl High Temp . Magnetventil
-  VOLT Acero inoxidable de alta temperatura . Válvula de solenoide
-  Acier inoxydable haute température. Electrovanne

2/2 High Temperature Stainless Solenoid Valve

The type SV5232 is Synonymous with steam switching for high temperatures up to 185°C. Rated up to 10 bar from 1/2" - 2" – Servo Assisted. 0.2 bar



Seal Material	
185° C	PTFE

IP65 Coil & Connector PG9 – DIN 43650 A
 BSPT + NPT Threads
 Normally Open (Not ATEX)
 ATEX 22003EX Coil: ATEX EExmII T4 II 2G & 2D IP65 T130°C

Electrical Data					
Voltage (-10% + 10%) Continuous duty 100%	Coil	Power Consumption		Insulation Class	IP Rating With Connector
		Inrush	Hold		
24 - 110 - 230 – 380 (50 or 60 Hz)	WPA2	40VA	24.4VA	H 180°C	IP65 with Connector
12 - 24 (DC)		18 Watts			

SPECIFICATIONS						Dimensions		
Port	Orifice	Kv Ltr/min	Pressure Rating (Bar)		Weight Kg	L	H	D
			Min	Max				
1/2"	17	67	0.2	10	1.4	82	120	48
3/4"	17	100			1.5	82	120	
1"	22	200			1.8	100	134	
1 1/4"	30	300			2.8	125	149	
1 1/2"	30	367			2.9	125	146	
2"	50	800			5.8	168	173	